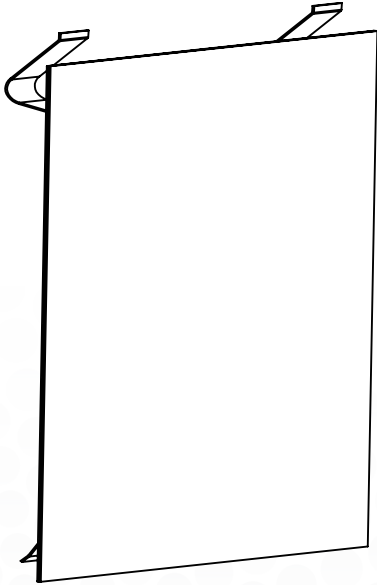


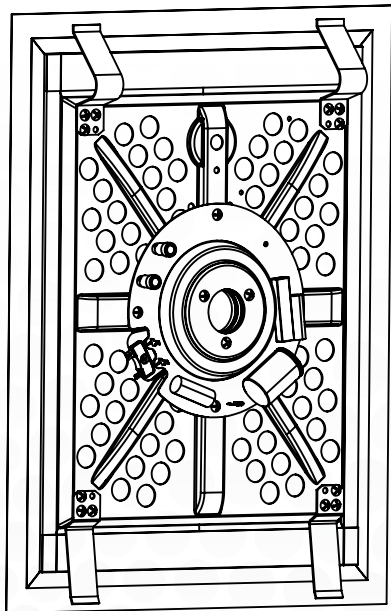


# SoundWall™ SURFACE



SoundWall™  
SURFACE SEMI HIDDEN  
SH17C

SoundWall™  
SURFACE HIDDEN  
H17C



User manual and installation guide

# Introduction

Dear Customer,  
Thank you for choosing Morel's SoundWall™ surface Series!

This handcrafted speaker was designed and constructed to offer extraordinary sound quality for both stereo and home theater applications, while integrating into your home walls and providing a magical experience both aesthetically and musically.

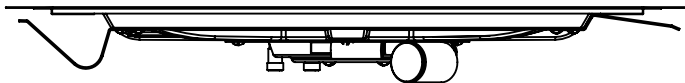
The information in this manual will help you get the best possible performance out of your speakers. If you have any questions, please contact your Morel dealer or Morel Support at [www.morelhifi.com](http://www.morelhifi.com)

## About the Surface Series:

Speaker design has evolved to address the need for life-style products that can be immersed seamlessly into our living space. The dilemma of how to do this in the most effective, hassle-free way while offering sound fidelity, has been a true challenge for many. Morel's new revolutionary Soundwall™ Surface provides a unique solution to this problem.

The Soundwall™ Surface is designed to bring any ordinary wall to life- with music. The technology mix of direct-drive motor system with a gigantic 2.1" voice coil and innovative material composition, results in a dynamic, rich and balanced musical performance that seamlessly integrates in any living space.

With installers in mind, the newly developed "easy-grip" installation system ( patent pending) enables a sturdy install by gripping the edges of the wall with fixed-clamps while using the forces of gravity and pressure to hold the speaker in place.



## Models:

**Fully-Hidden H17C** is an invisible in-wall, creating a seamless integration with the wall finish and texture. Morel's patent pending "easy-grip" installation method makes the H17C the easiest invisible speaker to install to-date.

**The Semi-Hidden SH17C** is super easy to install and has a narrow contoured frame that rests on the edges of the wall cutout with a very thin rim (less than 3mm), enabling to effortlessly blend it into the wall's finish, with a smooth grill-free look that can be painted or textured over.

# Installation preparation

## Wall Cavity Insulation

To achieve the very best from your loudspeakers we recommend you fill the wall cavity behind the speakers with insulation. It is important to try and keep the same amount of insulation material for each speaker to receive a true consistent bass response.

Install insulation also in the bays adjacent to the speaker location to reduce the noise produced by unsupported drywall. If in doubt, please consult your dealer / installer.

## Back Box

Morel's SoundWall™ Surface speakers infinite baffle design allows you to place them in the wall cavity without the need for an enclosure. Nonetheless, in order to reduce sound transmission to other rooms it is recommended to use a back box / enclosure.

Morel's ideal recommended enclosure size for the SoundWall™ Surface 6" speaker is 7-13 liters.

## In-Wall Speaker Placement (For multi channel, home theatre or stereo applications)

The speaker's position has a great effect on the sound quality and soundstage created. Here are some recommended guidelines that will assist you in the speaker placement process.

Morel's SoundWall™ Surface speakers are designed to work well in both small and large rooms.

Regardless of the application you may require it is recommended to make sure there are no objects that may block the area between the listener and the speakers. Before installing the speakers consider the proximity to the electricity and other fixtures.

We recommend adding a subwoofer in home theatre or stereo, for full range enjoyment.

## Speaker Orientation

It is recommended to install the Soundwall™ Surface in portrait position, although it is not an essential criteria for delivering the ultimate acoustic performance.

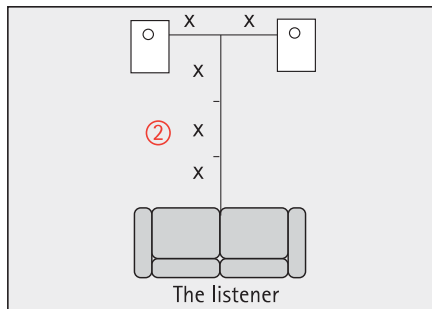
The portrait position does however allow Morel's patent pending "easy-grip" installation system to tighten the speaker to the wall in the most optimal way, minimizing interference with the studs of the drywall.

## How to Achieve the Best Performance?

- Use only good quality connection cables, to avoid interference, deterioration and elevated noise level.
- Do not secure the cables with tight solutions.
- Avoid interference with other electrical appliances.
- Avoid positioning your speaker in moist, sunny or dusty environments.

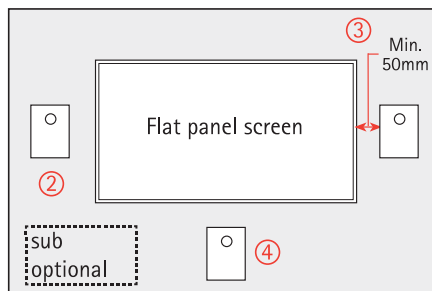
## Recommended speaker placement for stereo application

- 1 The top half of the surface speaker should be located at ear level
- 2 The distance between the speakers is  $\frac{2}{3}$  the distance from the listener
- 3 Aim to set the speaker as close as possible to this diagram for optimal performance



## Recommended speaker placement for home theatre application

- 1 Place the speaker on either sides of the flat panel
- 2 The speaker should be centered to the flat panel screen
- 3 The distance between the four edges of the flat panel screen and the speaker should be minimum 50mm
- 4 Preferably place the centre speaker under the flat panel screen (or above).



\* If additional speakers are desired - they should be placed at the same height as the main frontal speakers (if positioned on the side walls)

## In ceiling installation

The Soundwall™ Surface Hidden speaker offers the perfect solution for fully integrated in-ceiling speakers, promising completely invisible speakers that deliver Morel's signature quality sound.

Use only H17C model for fully hidden installations.

Speaker orientation depends solely on installers preferences and does not affect the acoustic performance.

In order to achieve a uniform audio coverage in a room - space the speakers evenly in the ceiling. If the ceiling is higher than 6 meters, Morel suggests installing the speakers in the walls.



# SoundWall™ Surface Installation

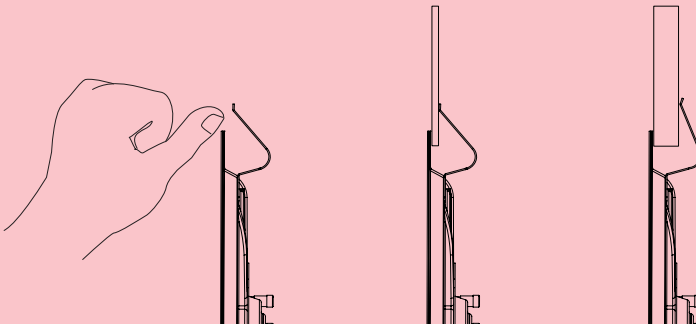
## WARNING!

The SoundWall™ Surface is designed to be painted upon or have wallpaper finish or wood venire glued on it. However- when choosing your paint or glue, use strictly acrylic based materials. Avoid using any solvent based materials on the surface such as alcohol etc.!

## “Easy Grip” Installation

Morel surface offers a unique and easy installation with its especially designed “EASY GRIP” system. The system consists of spring metal clamps that can fit any thickness of plaster wall boards, with no screws or drilling needed.

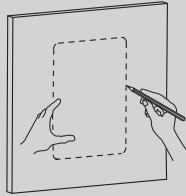
However for plaster boards thicker than 10mm Morel recommends to bend manually the clamps for a more open angle in order to fit thicker plaster boards with ease according to the illustration below.



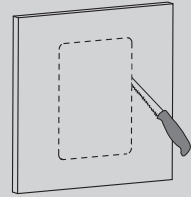
# SoundWall™ Surface Installation (In Plaster Walls)

## Semi Hidden Installation SH17C

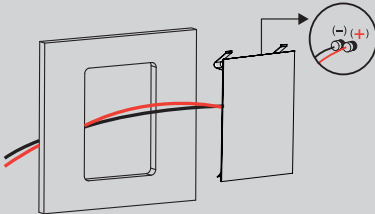
- 1 Mark the desired speaker location on the wall with the cutout cardboard template provided. (Make sure there is no infrastructure / stud at the back of the drywall in your desired speaker location).



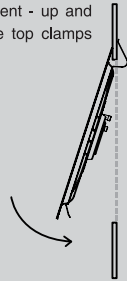
- 2 Gently cut the wall



- 3 Connect the cables to the speaker inputs (+) to (+) and (-) to (-)



- 4 Use a lever movement - up and down - to place the top clamps and grip the wall.



- 5 Place the bottom clamps to grip the wall

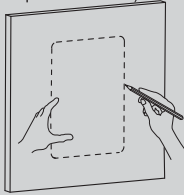


- 6 Push the speaker down until the bottom clamps lock the speaker in its position

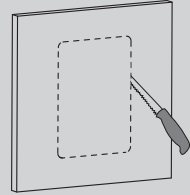


# Hidden Installation H17C

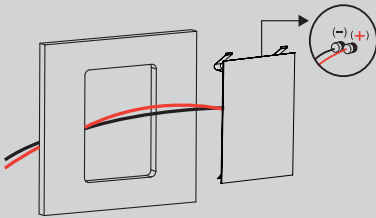
- 1 Mark the desired speaker location on the wall with the cutout cardboard template provided. (Make sure there is no infrastructure / stud at the back of the drywall in your desired speaker location).



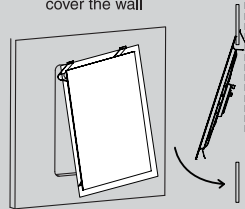
- 2 Gently cut the wall



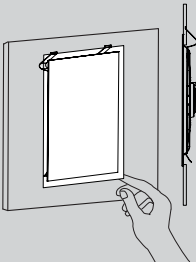
- 3 Connect the cables to the speaker inputs (+) to (+) and (-) to (-)



- 4 Use a lever movement - up and down - to place the top clamps and grip the wall while placing the paper wings to cover the wall



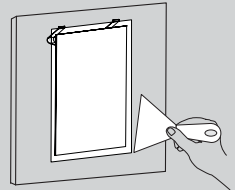
- 5 Place the bottom clamps to grip the wall while the paper wings cover it



- 6 Push the speaker down until the bottom clamps lock the speaker in its position



- 7 Use painter's putty / dry wall compound as a glue, first under the paper and then around it so it sticks to the wall. Next place painter's putty / dry wall compound on the partition line. Make it level with the wall surface. Let it dry. Once dry, lightly sand the area until smooth and Spackle over the putty. Repeat this process to your satisfaction. Once dry you may paint the wall



# Specifications

SURFACE

Semi Hidden SH17C / hidden H17C

Construction	Steel body	Frequency response	100-20,000Hz (±3dB)
Drive units	Polypropylene 1.2mm flat membrane 2" voice coil, Double Magnet Neodymium motor, copper sleeve	Voice Coil Diameter	54mm (2")
		Voice Coil Wire	Hexatech™ Aluminum
Nominal impedance	8 ohm	Overall exterior dimensions (WxH / ø)	13.7"x10.2" / 14.6"x11.1" (350x260mm) / (373x282mm)
Sensitivity 2.83V/1M	84dB	Cut Out Dimensions (WxH / ø)	12.7"x9.4" / 14"x10.4" (318x238mm) / (356x266mm)
Power handling	90W (40W RMS)	Mounting Depth	1.5" (40mm)
Resonance Frequency	100Hz	Net Weight	2.6lb (1.18Kg)
Operating power	10-40W (RMS)	Finish	White
Crossover	6dB - 120Hz high pass		

## Sound Dispersion

The SoundWall™ Surface in-wall speakers are designed to provide Omni-directional sound dispersion. This graph shows the speaker omni response at different off-axis.

